

RPM GLOBAL
RPM CONNECT LIVE
RPM PERTH 2025

21st March 2025 | The Westin Perth

- EVENT AGENDA -

Industry Case Studies
Exclusive Product Insights
Networking Opportunities

JUMP TO SECTION

Main Agenda

Mining Stream

Asset Management Stream

Welcome

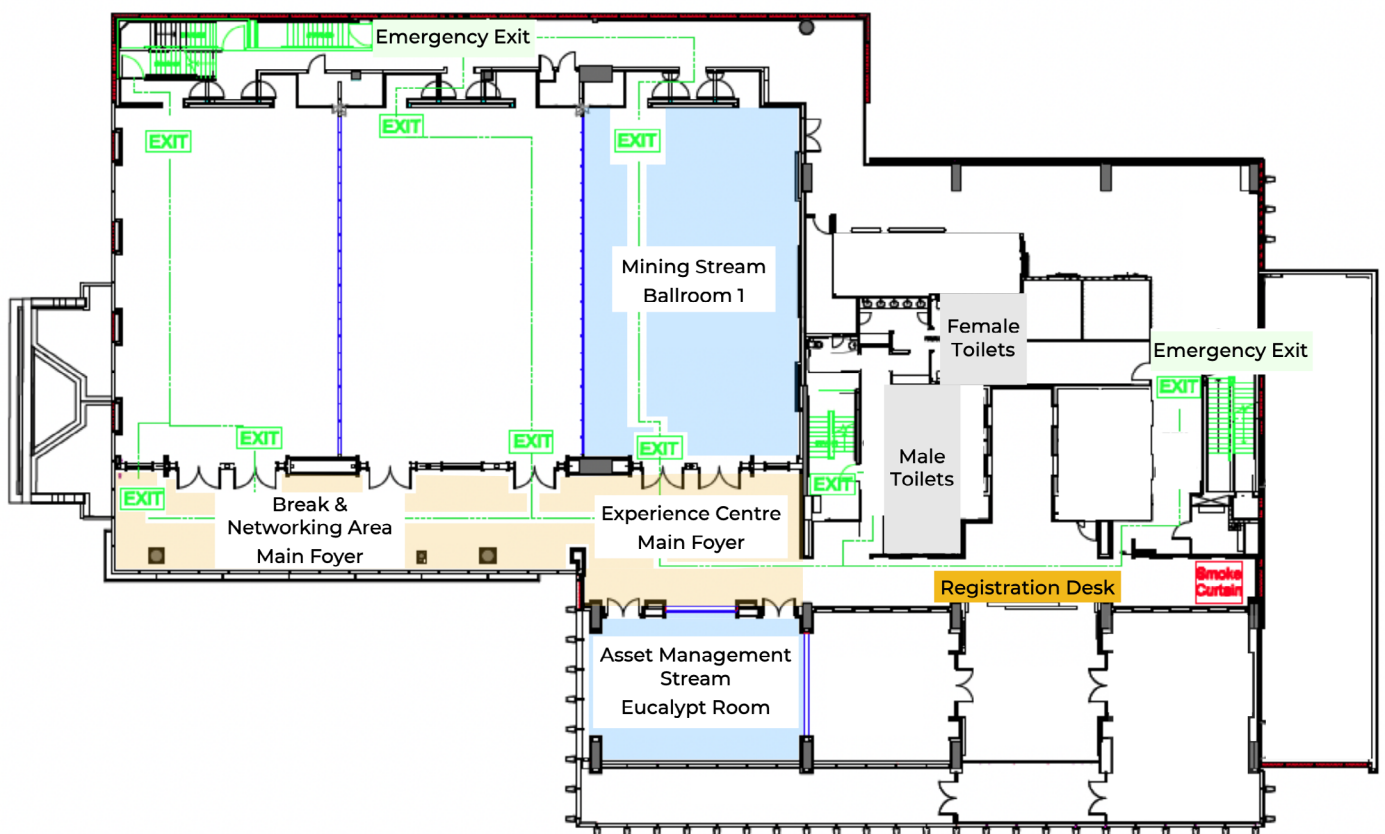
We're thrilled to have you join us for our sixth annual event, where industry professionals and product experts come together to explore the latest innovations in mining and asset management.

This year, we're bringing you two dedicated streams: **Mining & Asset Management**. Dive into insightful sessions covering cutting-edge software developments, practical technical knowledge, and industry best practices. Whether you're looking to optimise scheduling, streamline financial planning, enhance operations, or refine asset maintenance strategies, our expert-led discussions, demos, and case studies will provide valuable takeaways.

Beyond the sessions, Perth Connect Live is also about connections - take the opportunity to network, exchange ideas, and engage with our RPMGlobal team and fellow industry professionals.

Thank you for being part of this exciting day. We look forward to an inspiring and productive event!

Site Map



Client Partners

Thank you to our partners joining us today; we appreciate your time and sharing your insights with us.

Mining

Rio Tinto



GOLD FIELDS



BHP

Asset Management

NewmontTM



BHP



OZLAND
MINING SERVICES PTY LTD

Key Contacts



Anthony Fraser

Regional General Manager - ANZ

✉ afraser@rpmglobal.com

[Connect on LinkedIn](#)



Michael Baldwin

Chief Commercial Officer

✉ mbaldwin@rpmglobal.com

[Connect on LinkedIn](#)



Luke Vedelago

Senior Business Executive

✉ lvedelago@rpmglobal.com

[Connect on LinkedIn](#)

Competition

Kahoot:

Download or access at kahoot.it to win great prizes!

Kahoot!

Play from Browser

Download on Apple Store

Download on Google Play



LinkedIn Competition:

We are excited to offer you the opportunity to win an **Apple Watch** with our LinkedIn Competition:

1. Snap an eye-catching photo during the event
2. Craft a compelling caption to accompany your photo
3. Mention RPMGlobal in your post
4. Share your post with your network

The winner will be revealed on April 1st. To win, ensure your photo garners the highest number of likes by capturing and sharing the standout moments from the event.*



* Terms and Conditions apply.
Model may differ from pictured.

Competition

Passport Competition

Connect. Explore. Stamp. Win!

Embark on a journey through our 'Experience Centre', exploring the world of RPMGlobal. Meet our Product Managers, sightsee our groundbreaking technology, and get your passport stamped at each destination.

Complete your passport for a chance to win the **YETI Crossroads® 35L/22" Wheeled Luggage** - perfect for your next adventure!

The winner of the Passport Competition will be announced at the end of the day.



* Terms and Conditions apply. Learn more at rpmglobal.com/privacy-policy/

Main Agenda | Ballroom 1

9:00am **Welcome to RPM Connect Live 2025**
Anthony Fraser | Regional General Manager - ANZ
Join our Regional General Manager for ANZ, Anthony Fraser, as he welcomes you to our sixth year of our annual Perth Connect Live.

9:10am **RPMGlobal Company Update**
Michael Baldwin | Chief Commercial Officer
Our CCO will share exciting updates on RPMGlobal, and get an insider's look at what's coming next as we unveil future developments that will shape the next generation of RPM solutions.

9:30am ★ **Join us in the Presentation Rooms** ★
Mining Stream | Ballroom 1
Asset Management Stream | Eucalypt Room

10:30am ◦ **Break** ◦

10:45am ★ **Join us in the Presentation Rooms** ★
Mining Stream | Ballroom 1
Asset Management Stream | Eucalypt Room

12:30pm ◦ **Lunch** ◦

1:25pm ★ **Join us in the Presentation Rooms** ★
Mining Stream | Ballroom 1
Asset Management Stream | Eucalypt Room

Main Agenda | Ballroom 1

3:30pm ◦ Break ◦

3:45pm ★ Keynote Speaker ★

Mick Collis

Mick's story is one of perseverance, teamwork, and a unique journey to the world stage. His story is both humorous and inspiring, highlighting the spirit of resilience and creativity.

4:25pm Closing Remarks & Prizes

Anthony Fraser | Regional General manager - ANZ

4:45pm ◦ Event Concludes ◦

5:00pm Networking Event

Join us next door at Picada as we conclude the day.

RPMGLOBAL
RPM CONNECT LIVE
RPM PERTH 2025

MINING STREAM

Ballroom 1

Mining Stream | Ballroom 1

9:30am XECUTE Showcase

James Kennon | Product Manager - XECUTE

See XECUTE product highlights and take a look at the exciting new developments coming in the upcoming releases of the industry's leading operational scheduling solution.

10:00am ★ **Product Launch** ★

FleetOptimiser for XECUTE - The path to shift-level, truck-balanced scheduling

Adam Price | Product Manager - Simulation

Chet Fong | Senior Solution Executive

Explore how FleetOptimiser enhances the XECUTE scheduling process by intelligently assigning and balancing fleet resources. This session will highlight strategies for maximising fleet efficiency and reducing downtime.

10:30am ◦ **Break** ◦

10:45am ★ **Panel Session** ★

Executing Excellence

Panel Moderator: Luke Vedelago | Senior Business Executive, RPMGlobal

Paul Oakley | Manager West Australian Nickel, BHP

Sandon Putland | Superintendent, Atlas Iron

Nathan Daams | Senior Advisor, Surface Mining, Rio Tinto

What does “great” look like in the execution planning space and what are the challenges? How do we best communicate knowing, with so many stakeholders, a slight miss can have major implications down the chain?

Mining Stream | Ballroom 1

11:25am

★ **Solution Launch** ★

Total Operational Planning

Adam Price | Product Manager - Simulation

Chet Fong | Senior Solution Executive

So we have a balanced and achievable plan - what else is on the critical path? Total operational planning looks at ensuring tasks are assigned to support the execution of plan and the reports and dashboards to track performance.

11:50am

★ **Panel Session** ★

Physical to Financials

Diego Santibanez Dubo | Senior Manager Mining Studies - Gold Fields

Our panel of experts talks about ensuring the scheduling teams are aligned with the financial expectations of the business.

12:10pm

★ **Product Launch** ★

XERAS Cloud

Darren Rostron | Product Manager - XERAS

The evolution of the industry's leading financial modelling solution. Discover the latest developments in XERAS Cloud and how it continues to revolutionise financial modelling in mining.

12:30pm

◦ **Lunch** ◦

1:25pm

Energy Constrained Scheduling - Planning for the Transition to Battery Electric Fleet

Alun Phillips | Product Manager - Scheduling

As mining shifts toward battery-electric equipment, energy demand is skyrocketing. RPM MinePlanner is leading the way with true equipment scheduling and new energy constraint capabilities, making the transition from diesel to battery-electric seamless.

Mining Stream | Ballroom 1

2:00pm

★ **Guest Speaker** ★

Pivotal Mine Planning Moments in Search of the Holy Grail - BHP

Paul Oakley | Manager West Australian Nickel - BHP

A share of pivotal moments over 25 years of Mine Planning that have formed a view of a Mine Planning holy grail.

2:20pm

Automated Design - Does it Live up to the Hype?

Alun Phillips | Product Manager - Scheduling

Automated Design: if it's such a game changer, then why is the game still the same?

2:40pm

The Industry Has Evolved - Has Your Planning?

Chet Fong | Senior Solution Executive

A look at alternative and new ways of planning and the value a change of approach can provide.

3:00pm

Strategic to Tactical - Enterprise Optimiser: MinePlanner's New Strategic Module

Alun Phillips | Product Manager - Scheduling

Consistency and collaboration through the many mine planning horizons.

3:30pm

◦ **Break** ◦

End of Mining Stream Presentations

Join us for our Keynote as we wrap-up for the day

RPMGLOBAL
RPM CONNECT LIVE
RPM PERTH 2025

**ASSET MANAGEMENT
STREAM**

Eucalypt Room

Asset Management Stream | Eucalypt Room

- 9:30am **The Next Generation of AMT Starts Now**
Antonio Carioca | Product Manager - Asset Management
Ian Sedgwick | Senior Solutions Executive
We review the latest AMT developments and take a look at the exciting roadmap for the Next Generation of our leading Asset management Solution for Mining.
-
- 9:55am ★ **Guest Speaker** ★
Central Planning - Offshore
Kevin Fitzgerald | Ozland
In this informative presentation by our valued partners, Ozland, they will take you through understanding offshoring and the benefits it can add to your business.
-
- 10:15am **AMT Mobile: Enhancements & the Road Ahead**
Paul Beesley | Chief Technology Officer
Discover the latest advancements in AMT Mobile, designed to tackle real industry challenges and improve usability, efficiency, and connectivity in the field. Plus, get an exclusive look at our development roadmap, highlighting upcoming features that will further empower mobile users and streamline asset management on the go.
-
- 10:30am ◦ **Break** ◦
-
- 10:45am ★ **Guest Speaker** ★
Changing for Enterprise Maintenance Budgeting
Tom Gleeson | Manager Maintenance Budgeting Solution - BHP
Join our valued partners, BHP, to hear their story on recently going live globally with AMT, and how they implemented a new approach to budgeting for maintenance. With a key focus on Change Management, and the importance of involving sites and stakeholders throughout the journey.
-

Asset Management Stream | Eucalypt Room

11:20am **AI in AMT - AMT Insights**

Antonio Carioca | Product Manager - Asset Management

AMT Insights - your AI-powered, built-in virtual consultant. It continuously monitors your data and presents incisive intelligence that eliminates guesswork by generating practical, high-impact recommendations that deliver real value. From strategies and work orders to budgets, risk, and master data that underpins it all, AMT Insights identifies the key underlying drivers and provides precise, actionable insights to optimise your asset management. This new intelligence ensures you continually maximise the value of your AMT solution.

11:40am **★ Product Launch ★**

STO Planning

Antonio Carioca | Product Manager - Asset Management

Shutdown, Turnaround, and Outages. This session launches the exciting new STO module designed to streamline and manage shutdowns, turnaround, and outages through AMT.

12:05pm **★ Guest Speaker ★**

Importance of Quality Data

Carlene Warrener | Senior Manager Strategic Planning - Newmont

Aaron Morris | Strategic Planning - Newmont

Hear our guest speakers talk through their real world experiences and the importance of having quality data when creating budgets.

12:30pm **◦ Lunch ◦**

Asset Management Stream | Eucalypt Room

1:25pm

★ **Guest Speaker** ★

Task Strategy

Aldwin Cano | Mobile Maintenance Planner - Norton Goldfields

A task strategy is a detailed task plan that specifies the direction and scope of tasks for a long-term period.

2:00pm

Managing Risk in Budgets

Ian Sedgwick | Senior Solutions Executive

See the latest capabilities that help to manage risk and what reports you can use to help.

2:20pm

AMT Reporting - Update on AMT's New DataMart

Ben Moran | Asset Management Consulting Lead

See how one of our newest solutions can benefit your operations. This session will showcase some of the Reporting Highlights and what reports are built into AMT.

2:40pm

★ **Guest Speaker** ★

NRW

Leigh Cherry | Maintenance Systems Specialist - NRW

Hear from one of RPMGlobal's AMT 'Super Users' as he shares his knowledge and tips for getting the most from AMT.

3:00pm

★ **Product Launch** ★

XERAS Cloud

Darren Rostron | Product Manager - XERAS

See the evolution of the industry's leading financial modelling tool and what's next. Discover the latest developments in XERAS Cloud and how it continues to revolutionise financial modelling in mining. This session will cover new features, enhancements, and upcoming innovations.

Asset Management Stream | Eucalypt Room

3:30pm ◦ Break ◦

End of Asset Management Stream Presentations

Join us for our Keynote as we wrap-up for the day

Enhance Your Skills with RPMGlobal Training

RPMGlobal offers industry-leading training programs designed to expand your expertise and advance your career in the mining sector. Whether you're new to the industry or looking to refine your technical skills, our courses provide valuable learning opportunities that contribute to your professional development hours.

Participating in our courses contributes to your professional development hours, supporting continuous learning and career advancement.

Join us for the following Upcoming Courses in Perth:



Mining for Non-Miners (Metal) - 24th March 2025

This one-day course is design for those with no prior mining experience, offering a comprehensive overview of the mining cycle - from exploration to processing.

Mining for Non-Miners (Metal & Coal) - 29th - 30th April 2025

This two-day course provides a thorough understanding of the full mining cycle, covering both metals and coal, from exploration through to processing.

Mining Economics - 1st & 2nd May 2025

This course provides participants with a solid foundation in the fundamental principles of mining economics. It focuses on cost efficiencies involved in every step of the mining process and provides an introduction to systematic planning and the importance of engineering decision-making based on costs.

Asset Management (Fundamentals) - 6th May 2025

This one-day course provides participants with a solid foundation in the fundamental principles of asset management. It focuses on developing skills on how to apply complete equipment management programs for mining plant and equipment.

Asset Management (Life Cycle Costing) - 7th - 8th May 2025

This two-day course provides participants with a solid foundation in the application of life cycle costing (LCC) methods to mining plant and equipment. It focuses on teaching participants how to use LCC principles to solve real-world problems and to assess investments using reliability financial modelling and sensitivity analysis.

*** RPMGlobal Perth Connect Live Offer ***

Register for any of these upcoming courses and receive a discount!

Use code PERTHCL10 for 10% off

RPMGLOBAL
RPM CONNECT LIVE
PERTH 2025

Learn more about our Solutions



rpmglobal.com/software/