

RPM CONNECT LIVE **PERTH 2024**

22nd March 2024 | The Westin

- EVENT AGENDA -

Industry Case Studies

Exclusive Product Insights

Networking Opportunities

Welcome

Welcome to the Perth Connect Live. We are excited to share insights into our suite of innovative software solutions. We're proud to be joined by our client partners, showcasing their success within operations from the implementation of RPM software. We hope you enjoy the day!

Client Partners

Thank you to our Client Partners for sharing their time with us, and for their continued support. We look forward to hearing from them during today's sessions, check out who will be joining us below:

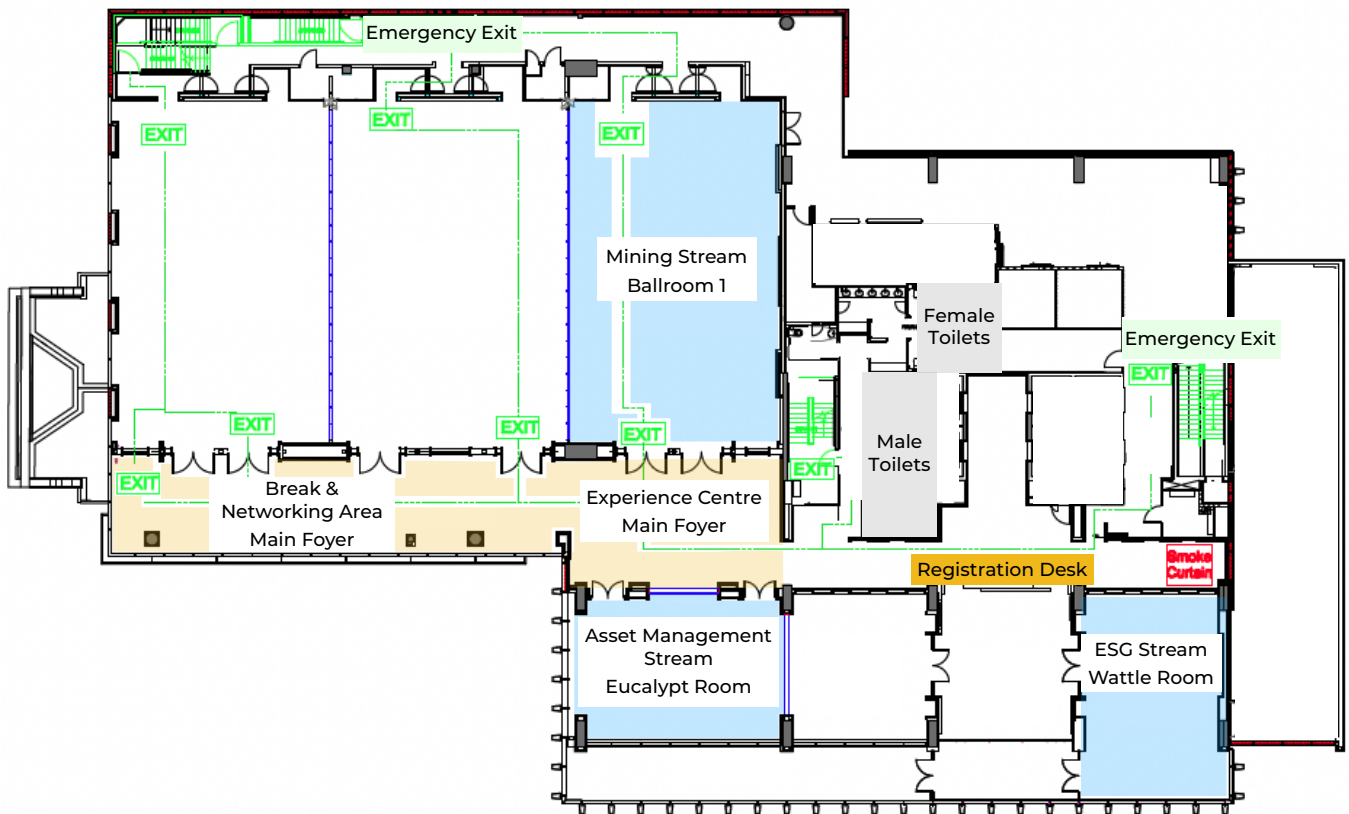
Mining



Asset Management



Site Map



Kahoot

Download or access from your browser to win great prizes!

[Play from Browser](#)

[Download on Apple Store](#)

[Download on Google Play](#)

Key Contacts



Michael Baldwin

Regional General Manager, APAC

📞 +61 407 518 885

✉️ mbaldwin@rpmglobal.com

[Connect on LinkedIn](#)



Luke Vedelago

Senior Business Executive, West Coast

📞 +61 409 455 452

✉️ lvedelago@rpmglobal.com

[Connect on LinkedIn](#)



Balthasar Lipscombe

Business Development Executive, APAC

📞 +61 419 402 337

✉️ blipscombe@rpmglobal.com

[Connect on LinkedIn](#)

Main Agenda | Ballroom 1

9:00am Welcome Address
Michael Baldwin | Regional General Manager - APAC

9:10am Product Strategy Update
Michael Baldwin | Regional General Manager - APAC
Our Regional General Manager for APAC, Michael Baldwin, will present an exciting update on our recent product developments as well as giving an exclusive look the future of RPM software.

9:30am ★ Join us in the Presentation Rooms ★
Mining Stream | Ballroom 1
Asset Management Stream | Eucalypt Room
ESG Stream | Wattle Room

10:30am ◦ Morning Tea Break ◦

10:45am ★ Join us in the Presentation Rooms ★
Mining Stream | Ballroom 1
Asset Management Stream | Eucalypt Room
ESG Stream | Wattle Room

12:30pm ◦ Lunch Break ◦

Main Agenda | Ballroom 1

1:15pm

★ Join us in the Presentation Rooms ★

Mining Stream | [Ballroom 1](#)

Asset Management Stream | [Eucalypt Room](#)

ESG Stream | [Wattle Room](#)

3:30pm

◦ Afternoon Tea Break ◦

3:45pm

★ Keynote Speaker ★

Los 33 Mineros

[Kelvin Brown](#) | [Drilling Optimiser](#)

Kelvin Brown is a drilling expert and a leader, and he has a story to share with you. A rescue mission took place in Northern Chile in aid of the 33 miners who had been trapped 700m below ground with minimal food, water and oxygen supply. They became trapped on August 5, 2010 when the upper galleries of their copper and gold mine collapsed. Kelvin shares his incredible story of the Chilean rescue and the leadership, teamwork and commitment required to rescue the miners.

4:40pm

Closing Remarks & Prizes

[Michael Baldwin](#) | [Regional General Manager - APAC](#)

4:55pm

Event Concludes

[Don't forget to pick up your event gift! We have a range of products from Yeti on offer.](#)

5:00pm

Networking Event

[Join us next door at Hadiqa Rooftop as we conclude the day.](#)

RPM CONNECT LIVE **PERTH 2024**

22nd March 2024 | The Westin

MINING STREAM

Ballroom 1

Abstract blue wavy lines in the bottom right corner of the page.



Mining Stream | Ballroom 1

9:30am

XECUTE Showcase

James Kennon | Product Manager - XECUTE

Product Highlights from the last year and a look at the exciting new developments coming out in the upcoming releases.

10:00am

★ Industry Case Study ★

XECUTE at OK Tedi Copper

Joe Isarua, Senior Mining Engineer | OK Tedi

Benson Lauke, Mining Engineer | OK Tedi

See how XECUTE was implemented OK Tedi Copper Mine, and its instant impact on production.

10:30am

◦ Morning Tea Break ◦

10:45am

★ Product Launch ★

Fleet Optimiser in ShiftManager

Adam Price | Product Manager - Simulation

A brand new module in our ShiftManager Solution that gives dispatchers and operational planners access to haulage calculations, providing increased efficiency.

11:25am

Design Solutions Showcase

Alun Phillips | Product Manager - Scheduling

See how this powerful suit of tools can be used for managing and manipulating spatial objects within MinePlanner.



Mining Stream | Ballroom 1

11:55am

★ **Industry Case Study** ★

From XACT to XECUTE at CITIC Pacific

Daniel Wright, Superintendent | CITIC Pacific

CITIC Pacific Mining underwent an implementation of XECUTE as an alternative to XACT planning software. The Presentation highlights key advantages of the XECUTE software as well as future improvements.

12:30pm

◦ **Lunch Break** ◦

1:15pm

★ **Product Sneak Peak** ★

MinVu Data Analytics

Michael Sydes | Product Manager - MinVu & EnviroDataVault

An exciting new module for the leading Operational Analytics platform.

1:55pm

The Excellence of Xecution

Chet Fong | Senior Solutions Executive

Every Mining Operation in the world has their own unique challenges, and users around the world have found some equally unique ways to deal with them.

2:15pm

★ **Product Sneak Peak** ★

XERAS Cloud & Showcase

Darren Rostron | Product Manager - Finance

The next evolution of the industry's leading financial solution.



Mining Stream | Ballroom 1

2:45pm

★ Industry Case Study ★

Pit to Port Planning at Atlas Iron

Sandon Putland, Superintendent - Mine Engineering & Surveying | Atlas Iron

Atlas Iron's journey from Excel spreadsheets and gantt charts to an optimized solution covering mining, crushing, haulage and shipping.

3:05pm

MinePlanner Showcase

Alun Phillips | Product Manager - Scheduling

Product Highlights from the last year and a look at the exciting new developments coming out in the upcoming releases.

3:30pm

◦ Afternoon Tea Break ◦

End of Mining Stream Presentations

Join us for our Keynote as we wrap-up for the day

RPM CONNECT LIVE PERTH 2024

22nd March 2024 | The Westin

ASSET MANAGEMENT STREAM

Eucalypt Room

Abstract blue wavy lines in the bottom right corner of the slide.



Asset Management Stream | Eucalypt Room

9:30am

AMT Showcase

[Antonio Carioca | Product Manager - Asset Management](#)

We share AMT's latest updates in version 8.26 and provide a sneak peek into the roadmap.

10:00am

★ Industry Case Study ★

Budgeting for the Enterprise

[Tom Gleeson, Manager - Maintenance Budgeting Solution | BHP](#)

Maintenance budgeting systems and processes in asset-intensive organisations lack efficiency, are heavily driven by manual data collation and are inconsistent across the enterprise. This limits the organisation's ability to provide visibility into expenditure, adequate cost variance reporting and ultimately, its compliance to strategic plans.

Delivering an enterprise-grade maintenance budgeting solution is the path to address these issues. Success of such solution can be measured through high levels of user adoption and executive support. Both of which can only be achieved through a successful organisational change management program that supports people, standardises processes and simplifies the technology stack. Don't underestimate the effort required to bring the business along for the journey. This includes senior leaders as well as finance, technology, and maintenance teams. Keep to the fundamentals when designing your initial program. The secondary benefits will come later, but they can only be realised after your core activity of building a budget has integrity.

10:30am

◦ Morning Tea Break ◦

10:45am

AI Tools

[Antonio Carioca | Product Manager - Asset Management](#)

Leveraging the power of Generative AI and Machine learning on AMT Deployments.



Asset Management Stream | Eucalypt Room

11:30am

★ Industry Case Study ★

Asset Management at Mineral Resources

Walter Vargas, Manager - AM Systems, Reliability and Asset Health | Mineral Resources

Mykailo Tershivski, Manager - Asset Management System Lead | Mineral Resources

Hear from our users from Mineral Resources, on their experiences with AMT.

11:55am

Maintenance Debt Masterclass

Ian Sedgwick | Senior Solutions Executive

Understand the impact of postponing your maintenance on your assets life cycle and operational performance.

12:30pm

◦ Lunch Break ◦

1:15pm

★ Industry Case Study ★

Asset Management at Gold Fields

Raj Patel, Senior Reliability Engineer | Gold Fields

Hear from our long time AMT users, as they share their insights and experiences.

1:55pm

AMT Mobile Showcase

Antonio Carioca | Product Manager - Asset Management

We share the recent enhancements to AMT Mobile and share the development roadmap, informed by industry challenges.



Asset Management Stream | Eucalypt Room

2:15pm

★ Panel Presentation ★

AMT Hidden Value

Antonio Carioca | Product Manager - Asset Management

Ian Sedgwick | Senior Solutions Executive

Ben Moran | Asset Management Consulting Lead

Join our team of asset management experts, as they share their tips and tricks.

2:45pm

★ Industry Case Study ★

Operate for Reliability - Data Capture Driving Behavioural Change

Steven Badcock, Group Production Systems Engineer | Glencore

A short presentation on the GCAA O4R journey. From recognising the need to changing behaviours and improving reliability. How MinVu data facilitated the initiative.

3:10pm

Reporting Update

Antonio Carioca | Product Manager - Asset Management

We'll showcase a range examples of custom reporting within AMT.

3:30pm

◦ Afternoon Tea Break ◦

End of Asset Management Stream Presentations

Join us for our Keynote as we wrap-up for the day

RPM CONNECT LIVE **PERTH 2024**

22nd March 2024 | The Westin

ESG STREAM

Wattle Room

Abstract blue wavy lines flowing from the bottom right towards the center of the page.



ESG Stream | Wattle Room

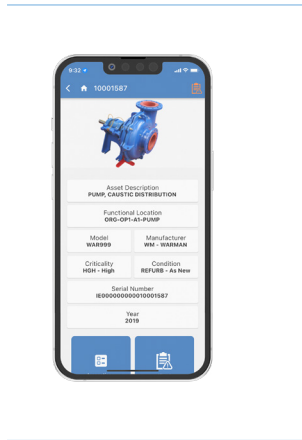
-
- 9:30am **Introduction to RPM ESG**
Siobhan Pelliccia | Manager - ESG Australasia
-
- 9:50am **Global Markets**
David O'Brien | Executive Consultant - ESG
We'll discuss emerging ESG disclosure requirements in operations.
-
- 10:10am **Sustainability Reporting**
Anel Joubert | Executive Consultant - ESG
An update on emerging frameworks and trends in ESG for mining.
-
- 10:30am ◦ **Morning Tea Break** ◦
-
- 10:45am **Project Financing - Lenders Expectations**
Diane Dowdell | Executive Consultant - ESG
Understanding lender's expectations when it comes to financing projects.
-
- 11:30am **Emissions Reporting**
Kim Sherry | Executive Consultant - ESG
Carbon literacy, safeguard mechanism and Scope 3 emissions.
-
- 12:00pm **Emissions Forecasting**
Darren Rostron | Product Manager - Finance
How to use XERAS for your emissions forecasting.
-
- 12:30pm ◦ **Lunch Break** ◦

-
- 1:15pm** **Simulating the Transition from Diesel**
[Adam Price | Product Manager - Simulation](#)
We'll showcase how RPM's solutions can be utilised to simulate energy options for fleets, supporting sustainable operations.
-
- 2:00pm** **Decarbonisation - Cost Benefits of Electrification**
[Alex McKinstry | Senior Mining Engineer](#)
A case study that highlights the power of HAULSIM in decarbonisation analysis.
-
- 2:25pm** **EnviroDataVault Solution**
[Michael Sydes | Product Manager - MinVu & EnviroDataVault](#)
[Craig Roberts | Consulting Director - ESG](#)
Don't miss the exciting live demonstration of RPM's EnviroDataVault, a unique SaaS tool for capturing, storing and managing data.
-
- 2:45pm** **GIS & Cumulative Impact Assessment**
[Anton Smit | Senior Environmental Advisor](#)
A case study on utilising publicly available data for a robust CIA.
-
- 3:05pm** **GIS & Mine Closure Monitoring**
[Craig Roberts | Consulting Director - ESG](#)
Discover the best path to demonstrating achievement of completion criteria.
-
- 3:30pm** ◦ **Afternoon Tea Break** ◦
-

End of ESG Stream Presentations

Join us for our Keynote as we wrap-up for the day

Experience Centre | Discover our products in the Foyer



AMT Mobile

Antonio Carioca | Product Manager - Asset Management

AMT Mobile is an easy-to-use, mobile asset management software solution that builds on the key strengths of the industry standard AMT, putting the power into the hands of technicians and field workers.



ShiftManager & Fleet Optimiser

Adam Price | Product Manager - Simulation

ShiftManager is a real-time short term planning and execution solution allowing every task to be planned, measured and reported.

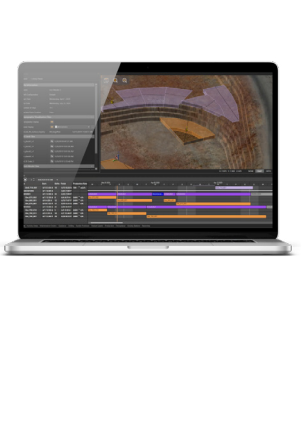
Get a sneak peek of our new Fleet Optimiser module, which provides dispatchers and operational planners access to haulage calculations.



MinVu Data Analytics

Michael Sydes | Product Manager - MinVu

MinVu is a data intelligence platform that captures, validates, augments and normalises data, which optimises reporting and analytics. We've recently developed an exciting new module that will be on show!



XECUTE

James Kennon | Product Manager - XECUTE

XECUTE enables planners to build a short-term schedule that's easy to understand and communicate, providing a coherent link between medium-term planning and operational execution.

Networking Function

Join us at Hadiqa Rooftop, just next door from The Westin, for an afternoon networking event. As we wrap up the day, we'll enjoy some delicious food and beverages as the sun sets.

We welcome you to chat further to our team about your operations and how our solutions can support your strategy.

Meet us at:

Hadiqa Rooftop at 5:00pm

Hibernian Place, Cnr Hay Street, 40 Irwin St, Perth WA 6000



RPM CONNECT LIVE PERTH 2024

Learn more about our Solutions



rpmglobal.com/apacsolutions